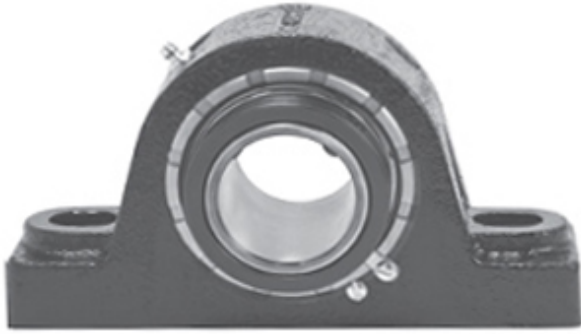




# REXNORD BEARING LIMITED

2.938 Inch | 74.625 Millimeter x 4.875 Inch |  
123.83 Millimeter x 3.25 Inch | 82.55 Millimeter  
REXNORD MA5215G06 Pillow Block Bearings



Bearing No. MA5215G06

MA5215G06 Bearing 2D drawings and 3D CAD models

Category	Pillow Block Bearings
Inventory	0.0
Manufacturer Name	REXNORD
Minimum Buy Quantity	N/A
Weight	12.94
EAN	0793699275292
Product Group	M06288
Number of Mounting Holes	2
Mounting Method	Concentric Collar
Housing Style	2 Bolt Pillow Block
Rolling Element	Spherical Roller Bearing
Housing Material	Cast Iron
Expansion / Non-expansion	Non-expansion
Mounting Bolts	3/4 Inch
Relubricatable	Yes
Insert Part Number	5215U
Seals	Heavy Contact
Housing Configuration	1 Piece Solid
Inch - Metric	Inch
Other Features	Double Row   Heavy Duty   Double Collar   Face Locked Threaded Cover   With Set Screw
Long Description	2 Bolt Pillow Block; 2-15/16" Bore; 3-1/4" Base to Center Height;



## REXNORD BEARING LIMITED

	Concentric Collar Mount; Spherical Roller Bearing; Relubricatable; Cast Iron; Heavy Contact; Non- expansion
Category	Pillow Block
UNSPSC	31171511
Harmonized Tariff Code	8483.20.40.80
Noun	Bearing
Keyword String	Pillow Block
Manufacturer URL	<a href="http://www.rexnord.com">http://www.rexnord.com</a>
Manufacturer Item Number	MA5215G06
Manufacturer Internal Number	127529
Weight / LBS	28.5
Bolt Spacing Minimum	0 Inch   0Millimeter
D	4.875 Inch   123.83 Millimeter
Actual Bolt Center to Center	8.1 Inch   206Millimeter
B	3.25 Inch   82.55 Millimeter
d	2.938 Inch   74.625 Millimeter
Bolt Spacing Maximum	0 Inch   0Millimeter
Nominal Bolt Center to Center	8.1 Inch   206.4 Millimeter