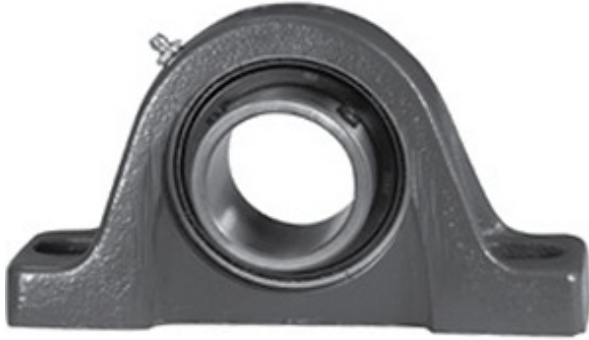




REXNORD BEARING LIMITED

2.938 Inch | 74.625 Millimeter x 2.266 Inch |
57.556 Millimeter x 3.313 Inch | 84.15 Millimeter
LINK BELT PL3S247E Pillow Block Bearings



PL3S247E Bearing 2D drawings and 3D CAD models

Bearing No. PL3S247E

Category	Pillow Block Bearings
Inventory	0.0
Manufacturer Name	REXNORD
Minimum Buy Quantity	N/A
Weight	7.37
EAN	0662864012171
Product Group	M06110
Number of Mounting Holes	2
Mounting Method	Set Screw
Housing Style	2 Bolt Pillow Block
Rolling Element	Ball Bearing
Housing Material	Cast Iron
Expansion / Non-expansion	Non-expansion
Mounting Bolts	7/8 Inch
Relubricatable	Yes
Insert Part Number	MB252-1516-PA
Seals	Single Lip Contact
Housing Configuration	1 Piece Solid
Inch - Metric	Inch
Other Features	Single Row Standard Duty Has Flinger
Long Description	2 Bolt Pillow Block; 2-15/16" Bore; 3-5/16" Base to Center Height; Set Screw Mount; Ball Bearing; 8-1/8" Minimum Bolt Spacing;



REXNORD BEARING LIMITED

	10-1/8" Bolt Spacing Maximum; Relubricatable; Cast Ir
Category	Pillow Block
UNSPSC	31171511
Harmonized Tariff Code	8483.20.40.40
Noun	Bearing
Keyword String	Pillow Block
Manufacturer URL	http://www.rexnord.com
Manufacturer Item Number	CL252-1516
Manufacturer Internal Number	5804384
Weight / LBS	16.23
d	2.938 Inch 74.625 Millimeter
B	3.313 Inch 84.15 Millimeter
Nominal Bolt Center to Center	9.5 Inch 241.3 Millimeter
Bolt Spacing Maximum	10.125 Inch 257.175Millimeter
D	2.266 Inch 57.556 Millimeter
Actual Bolt Center to Center	0 Inch 0Millimeter
Bolt Spacing Minimum	8.125 Inch 206.375Millimeter