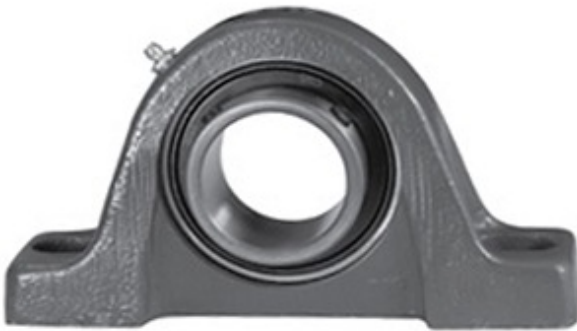




REXNORD BEARING LIMITED

1.75 Inch | 44.45 Millimeter x 1.766 Inch | 44.85 Millimeter x 2.125 Inch | 53.98 Millimeter LINK BELT P3S228E1 Pillow Block Bearings



Bearing No. P3S228E1

P3S228E1 Bearing 2D drawings and 3D CAD models

Category	Pillow Block Bearings
Inventory	0.0
Manufacturer Name	REXNORD
Minimum Buy Quantity	N/A
Weight	2.33
EAN	0793699300536
Product Group	M06110
Number of Mounting Holes	2
Mounting Method	Set Screw
Housing Style	2 Bolt Pillow Block
Rolling Element	Ball Bearing
Housing Material	Cast Iron
Expansion / Non-expansion	Non-expansion
Mounting Bolts	1/2 Inch
Relubricatable	Yes
Insert Part Number	MB251-34-E1PA
Seals	Viton
Housing Configuration	1 Piece Solid
Inch - Metric	Inch
Other Features	Single Row Standard Duty Has Flinger
Long Description	2 Bolt Pillow Block; 1-3/4" Bore; 2-1/8" Base to Center Height; Set Screw Mount; Ball Bearing; 5-13/32" Minimum Bolt Spacing;



REXNORD BEARING LIMITED

	6-17/32" Bolt Spacing Maximum; Relubricatable; Cast Ir
Category	Pillow Block
UNSPSC	31171511
Harmonized Tariff Code	8483.20.40.40
Noun	Bearing
Keyword String	Pillow Block
Manufacturer URL	http://www.rexnord.com
Manufacturer Item Number	C251-34-E1
Manufacturer Internal Number	0130053
Weight / LBS	5.14
Bolt Spacing Maximum	6.531 Inch 165.887Millimeter
Actual Bolt Center to Center	0 Inch 0Millimeter
d	1.75 Inch 44.45 Millimeter
Nominal Bolt Center to Center	5.8 Inch 146.5 Millimeter
Bolt Spacing Minimum	5.406 Inch 137.312Millimeter
D	1.766 Inch 44.85 Millimeter
B	2.125 Inch 53.98 Millimeter